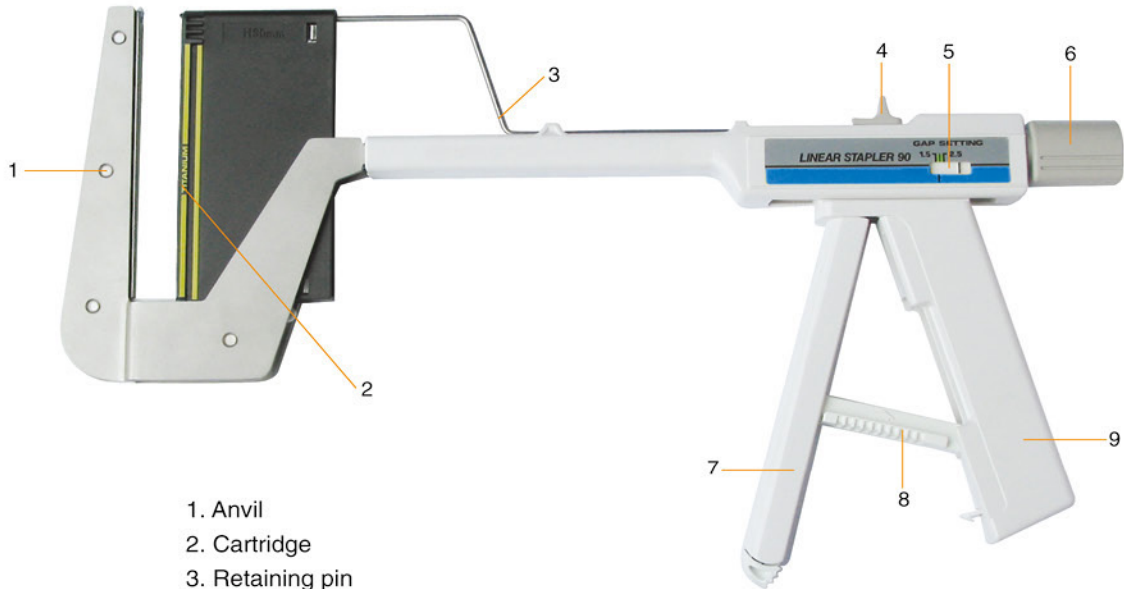
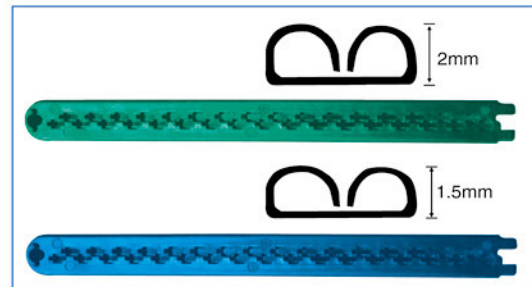


Disposable Linear Stapler



1. Anvil
2. Cartridge
3. Retaining pin
4. Retaining pin button
5. Window
6. Adjusting knob
7. Active handle
8. Safety
9. Fixed handle



Code No.	Cartridge Model	Suturing Thickness(mm)	Cartridge Color	Staple Height(mm)
FHY-30-3.8	CLB30	1.5	Blue	3.8
FHY-30-4.5	CLG30	2.0	Green	4.5
FHY-45-3.8	CLB45	1.5	Blue	3.8
FHY-45-4.5	CLG45	2.0	Green	4.5
FHY-60-3.8	CLB60	1.5	Blue	3.8
FHY-60-4.5	CLG60	2.0	Green	4.5

Features:

- + Single-use instrument avoid cross-infection.
- + Adjustable thickness of tissue sutured according to tissue thickness.
- + Various sizes staplers for different procedure requirements.
- + High-quality imported titanium staples, bigger tension-resistance on anastomosis.